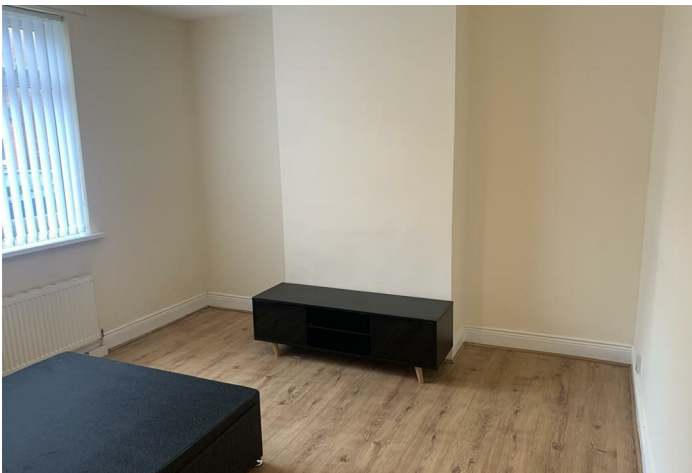




3 Rosiland avenue , Bedlington NE22 5BA

- NO CHAIN
- GROUND FLOOR
- INVESTMENT OPPERTUNITY
- TWO BEDROOM
- WITH YARD
- CLOSE TO LOCAL AMENTIES

£57,000





ML Estates are pleased to bring to the market this two bedroom ground floor flat, Located close to park and schools, with local amenities nearby this property is chain free and available to view as an ideal investment.

The Property comprises of a large main bedroom, following onto the second bedroom and Living room, To the rear of the property a galley style kitchen and beyond that a family bathroom.



MAIN BEDROOM

12'1 x 11'7

LIVINGROOM

9'11 x 12'3

BEDROOM TWO

8'1 x 8'9

KITCHEN

11 x 6'04

BATHROOM

8'01 x 5'06







Local Authority
Council Tax Band
EPC Rating C
Tenure Leasehold

Energy Efficiency Rating		Current	Potential
<i>Very energy efficient - lower running costs</i>			
(92 plus) A			
(81-91) B			
(69-80) C			
(55-68) D			
(39-54) E			
(21-38) F			
(1-20) G			
<i>Not energy efficient - higher running costs</i>			
England & Wales		69	74
	EU Directive 2002/91/EC		

Environmental Impact (CO ₂) Rating		Current	Potential
<i>Very environmentally friendly - lower CO₂ emissions</i>			
(92 plus) A			
(81-91) B			
(69-80) C			
(55-68) D			
(39-54) E			
(21-38) F			
(1-20) G			
<i>Not environmentally friendly - higher CO₂ emissions</i>			
England & Wales			
	EU Directive 2002/91/EC		



ML Estates Sales Office

27 Avenue Road, Seaton Delaval, Tyne
 And Wear, NE25 0DT

Contact

0191 237 60 60
 sd@mlestates.co.uk
 www.mlestates.co.uk/

Agents Note: Whilst every care has been taken to prepare these particulars, they are for guidance purposes only. All measurements are approximate and for general guidance purposes only and whilst every care has been taken to ensure accuracy, they should not be relied upon and potential buyers/tenants are advised to recheck the measurements.